

SECOND FLOOR PLAN

Amrinder Singh

PROPOSED PLAN FOR B ED BLOCK AT L R INSTITUTE OF EDUCATION
 T KHASRA NOS 71/1/18/1, 52/1/18, 22/1, 23/2, 40 MAUJA JABLI, SOLAN

REVISIONS

S.No	DONE FOR	DONE BY

AGGARWAL DESIGNERS (P) LTD
 ARCHITECTS INTERIOR DESIGNERS VALUERS
 ENGINEERS & VASTU CONSULTANTS

DELHI OFFICE UNIT No. 804 AGGARWAL CITY PLAZA
 NEAR TO M2N THEATRE SECTOR J ROHINI
 PH: (081) 2604813

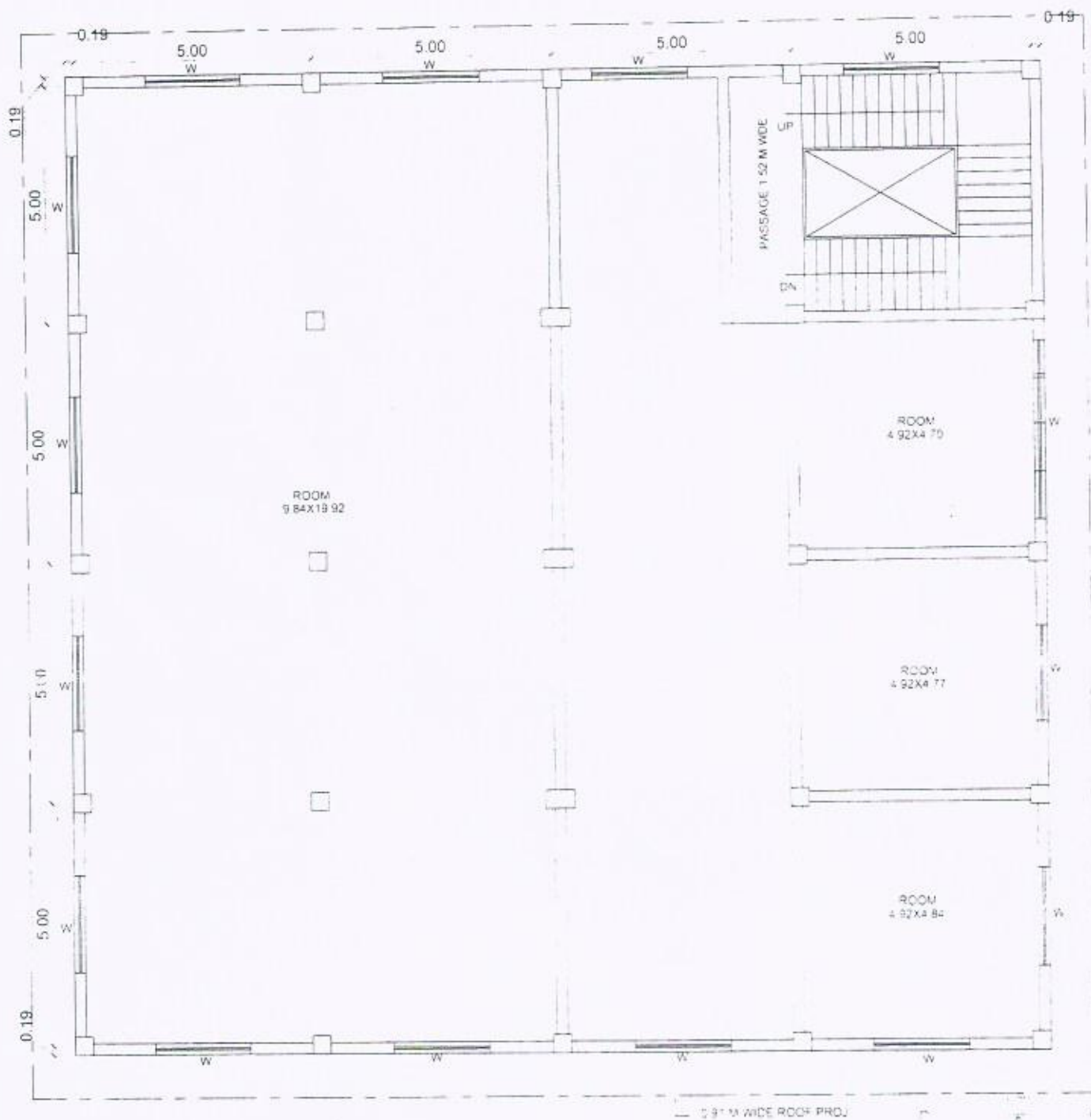
SOLAN OFFICE 603 SECTOR 15 SOLAN
 PH: 0130 2242603, 2242616
 M: 9416062603
 FAX: 0131 2242603

PROJECT TITLE:- FLOOR PLAN	SHEET No. :-	SCALE:- NOT TO THE SCALE
-------------------------------	--------------	-----------------------------



Director
L.R. Group of Institutes
Solan (H.P.)

हस्ताक्षर *Principal*
 दिनांक 22/1/2014
 L.R. Institute of Education
 (H.P.)



FIFTH FLOOR PLAN

Sumee Kapoor

PROPOSED PLAN FOR B.ED. BLOCK AT L.R. INSTITUTE OF EDUCATION
AT KHASRA NOS 71/18/1,52/18,22/1,23/2,40 MAUJA JABLI,SOLAN

REVISIONS

S No	DONE FOR	DONE BY

AGGARWAL DESIGNERS (P) LTD
ARCHITECTS-INTERIOR DESIGNERS-VALUER
ENGINEERS & VASTU CONSULTANTS

DELHI OFFICE UNIT No 364 AGGARWAL CITY PLAZA
NEAR TO MAX THEATRE SECTOR 1 ROHR
PH 08212694803

SHEET TITLE:-
FLOOR PLAN

SHEET No :-

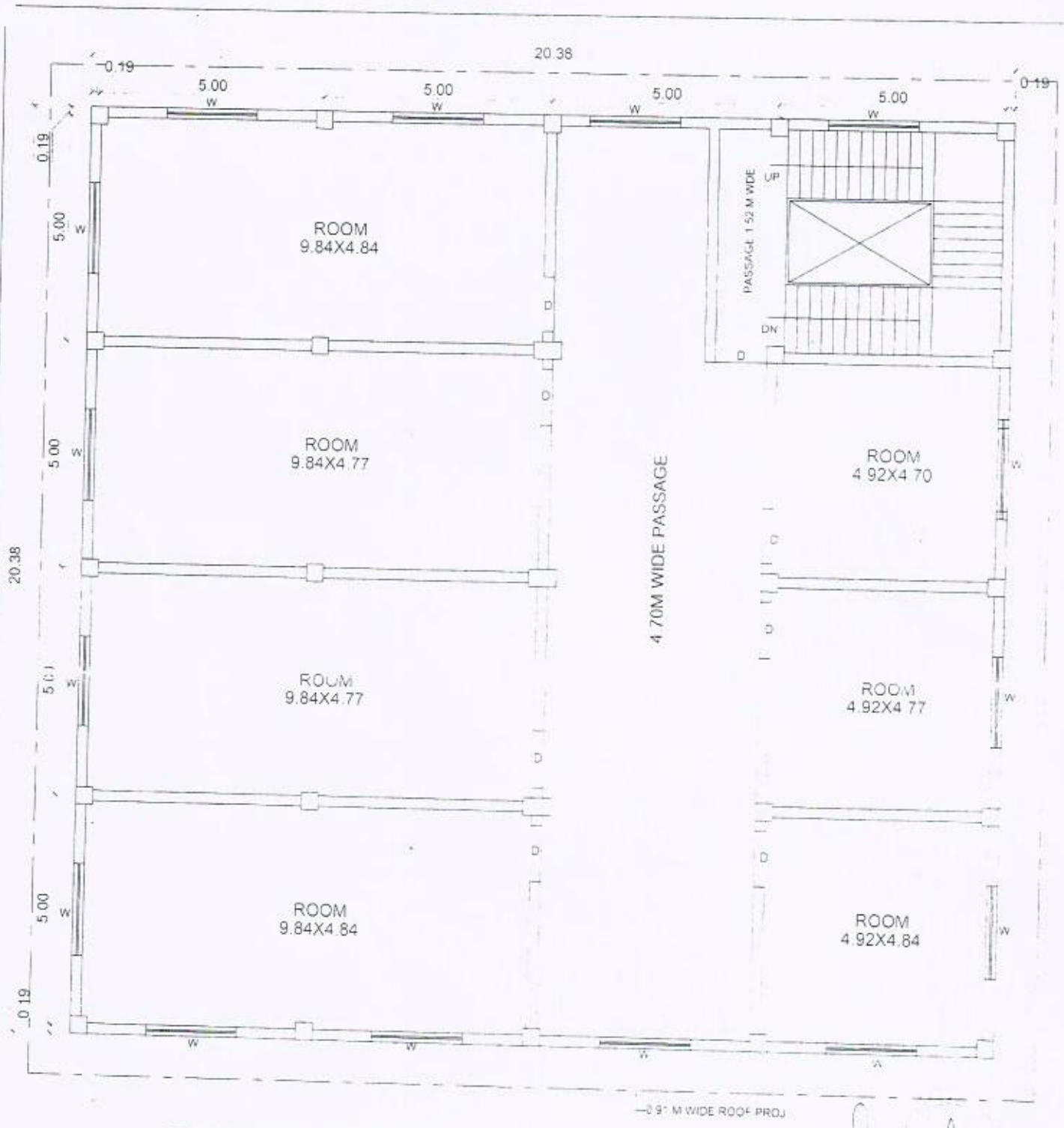
SCALE:-
NOT TO THE SCALE

SONPAT OFFICE 673 SECTION 8,SONPAT
PH 0130 2242603 2242625
M 94 10062803
FAX 0130 2242603

Director
L.R. Group of Institutes
Solan (H.P.)



Atul
Principal
L.R. Institute of Education
Solan (H.P.)



FORTH FLOOR PLAN

Signature

PROPOSED PLAN FOR B.ED. BLOCK AT L.R. INSTITUTE OF EDUCATION
AT KHASRA NOS. 71//18/1, 52//18.22/1, 23/2, 40 MAUJA JABLI, SOLAN

REVISIONS

S No.	DONE FOR	DONE BY

AGGARWAL DESIGNERS (P) LTD
ARCHITECTS INTERIOR DESIGNERS VALUERS
ENGINEERS & VASTU CONSULTANTS

SHEET TITLE -
FLOOR PLAN

SHEET No. :-

SCALE -
NOT TO THE SCALE

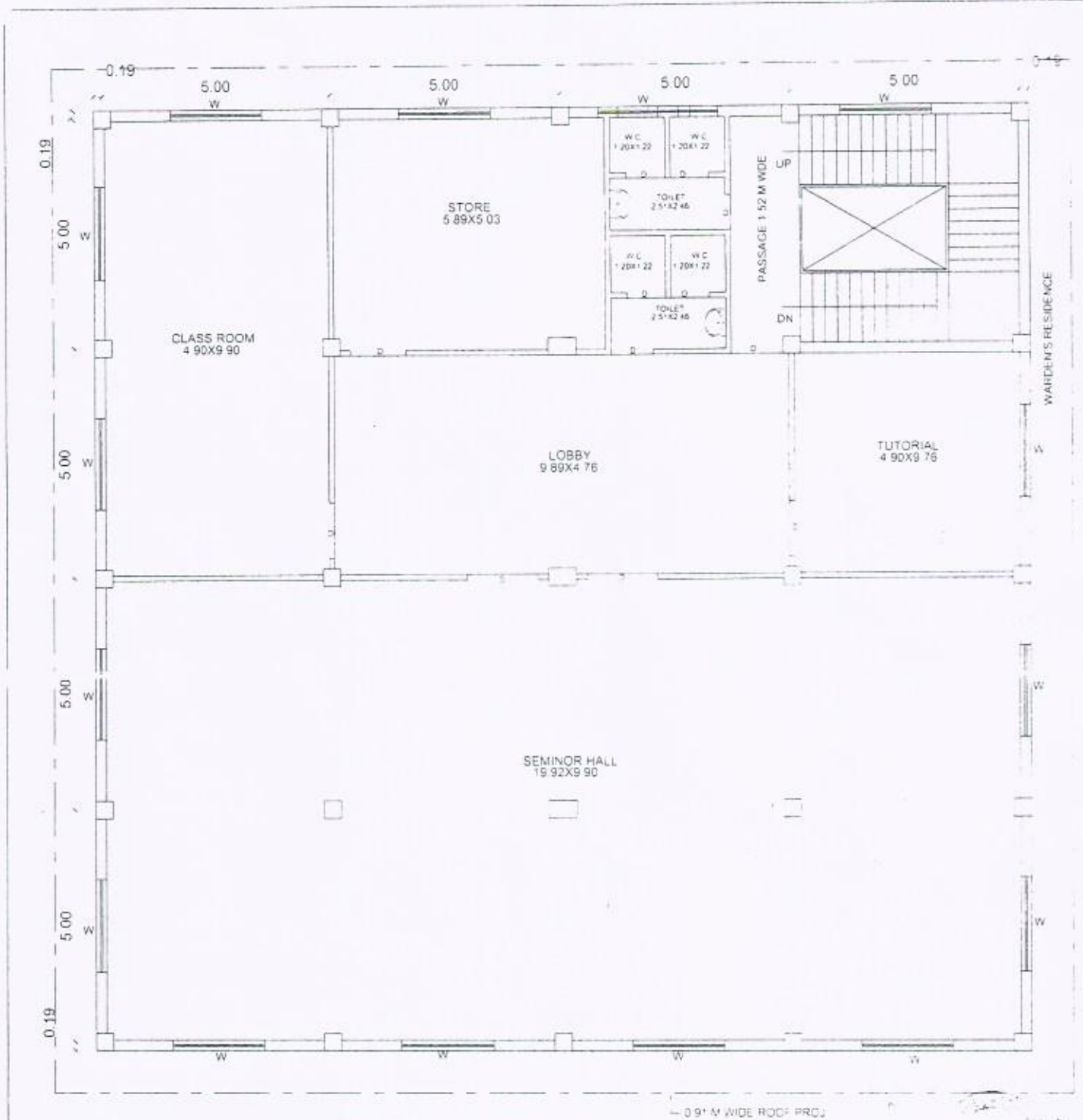
DELHI OFFICE UNIT NO. 384 AGGARWAL CITY PLACE
NEAR TO MCK THEATRE SECTOR 1 ROHINI
PIN - 110078 DELHI

GENERAL OFFICE NO. 503 80TH CROSS ST. 1ST FLOOR
PH. (0) 30 2242001 2242006
MOB. 98676503
FAX (0) 30 2242003

Signature
Director
L.R. Group of Institutes
Solan (H.P.)




Signature
Principal
L.R. Institute of Education
Solan (H.P.)



THIRD FLOOR PLAN

Kumhar

PROPOSED PLAN FOR B.ED. BLOCK AT L. R. INSTITUTE OF EDUCATION AT KHASRA NOS.71//18/1,52//18,22/1,23/2,40 MAUJA JABLI,SOLAN			REVISIONS S No. DONE FOR DONE BY		AGGARWAL DESIGNERS (ARCHITECTS INTERIOR DESIGNERS ENGINEERS & VASTU CONSUL)
SHEET TITLE - FLOOR PLAN	SHEET No -	SCALE - NOT TO THE SCALE	DELHI OFFICE UNIT No. 364 AGGARWAL CITY NEAR TO M2X THEATRE SECT. PH 08212604803		SONPAT OFFICE: 903 SECTOR 15 SONPAT PH 0130 2242803 2246278 FAX 0130 2242803


 Director
 .R. Group of Institutes
 Solan (H.P.)



Attested
